

木体:
 建築面積 160.89 m²
 1階面積 144.2 m²
 2階面積 106.69 m²
 延床面積 250.99 m²
 (96坪)

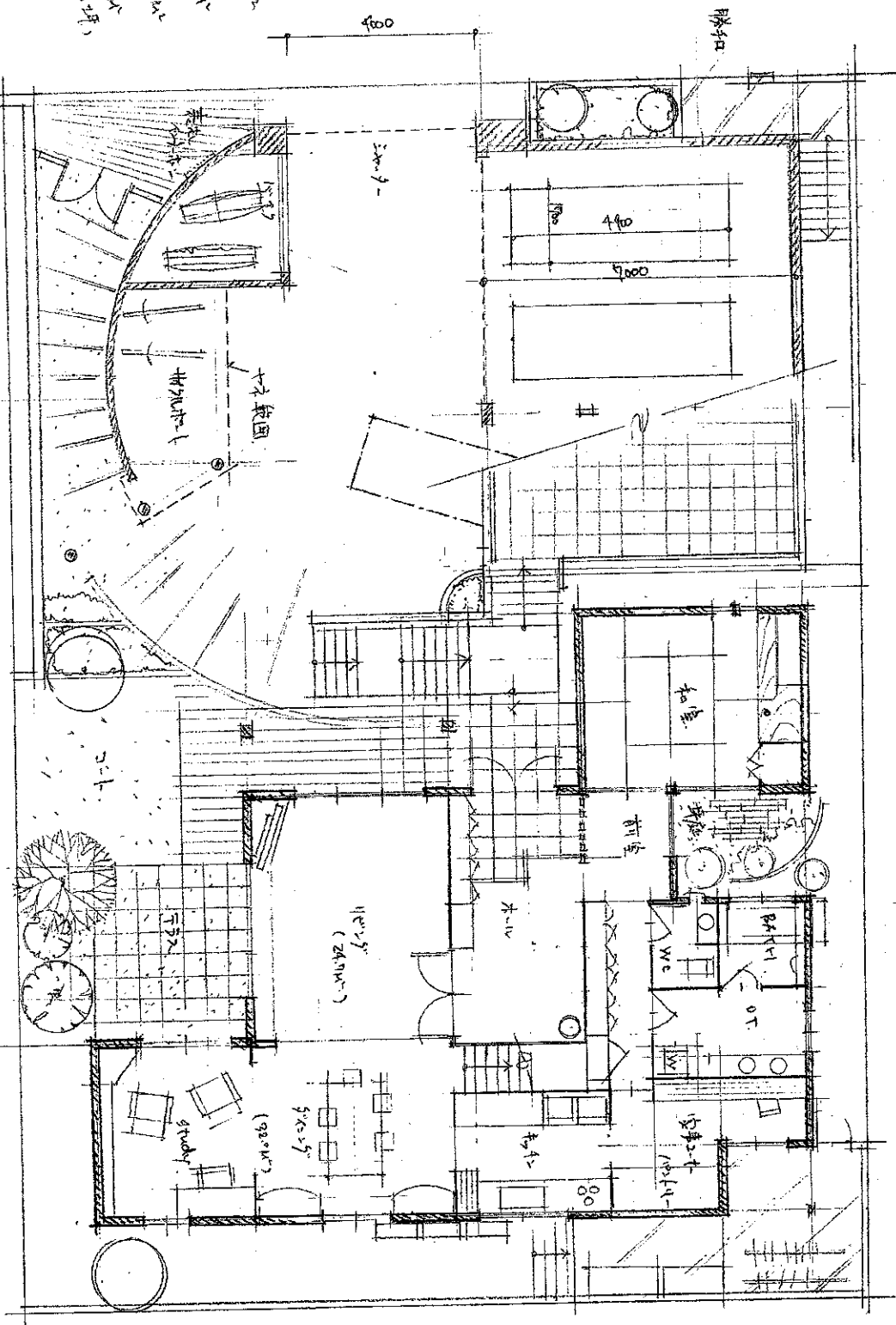
敷地 524 m²

50% 100%



$41.5 \times 66.5 + 9.6$
 $= 96.1 m^2$

$(2136.99 \rightarrow 45.2)$

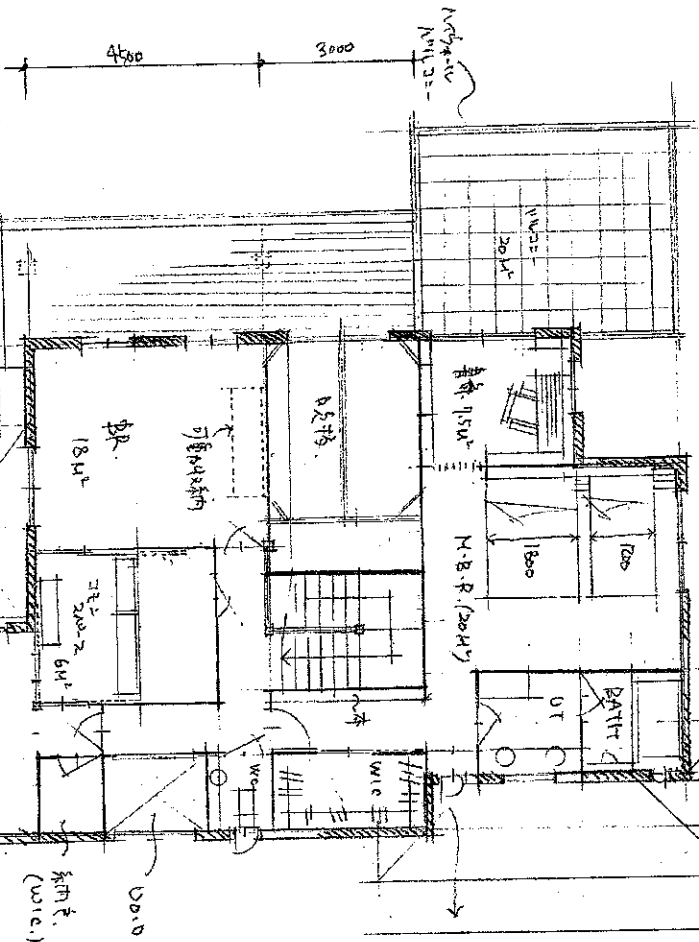
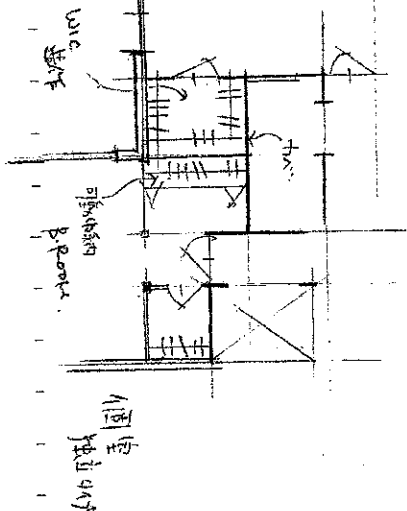
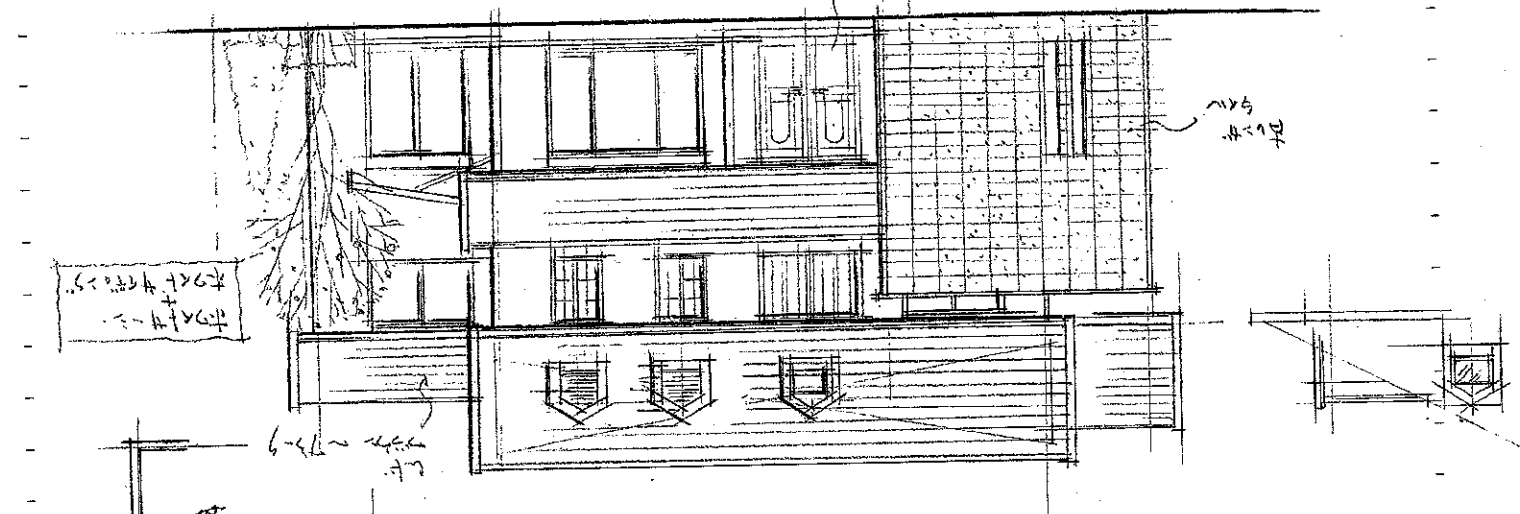


24.9 m² ... 11.9 m²
 32.0 m² ... 11.3 m²

立面图

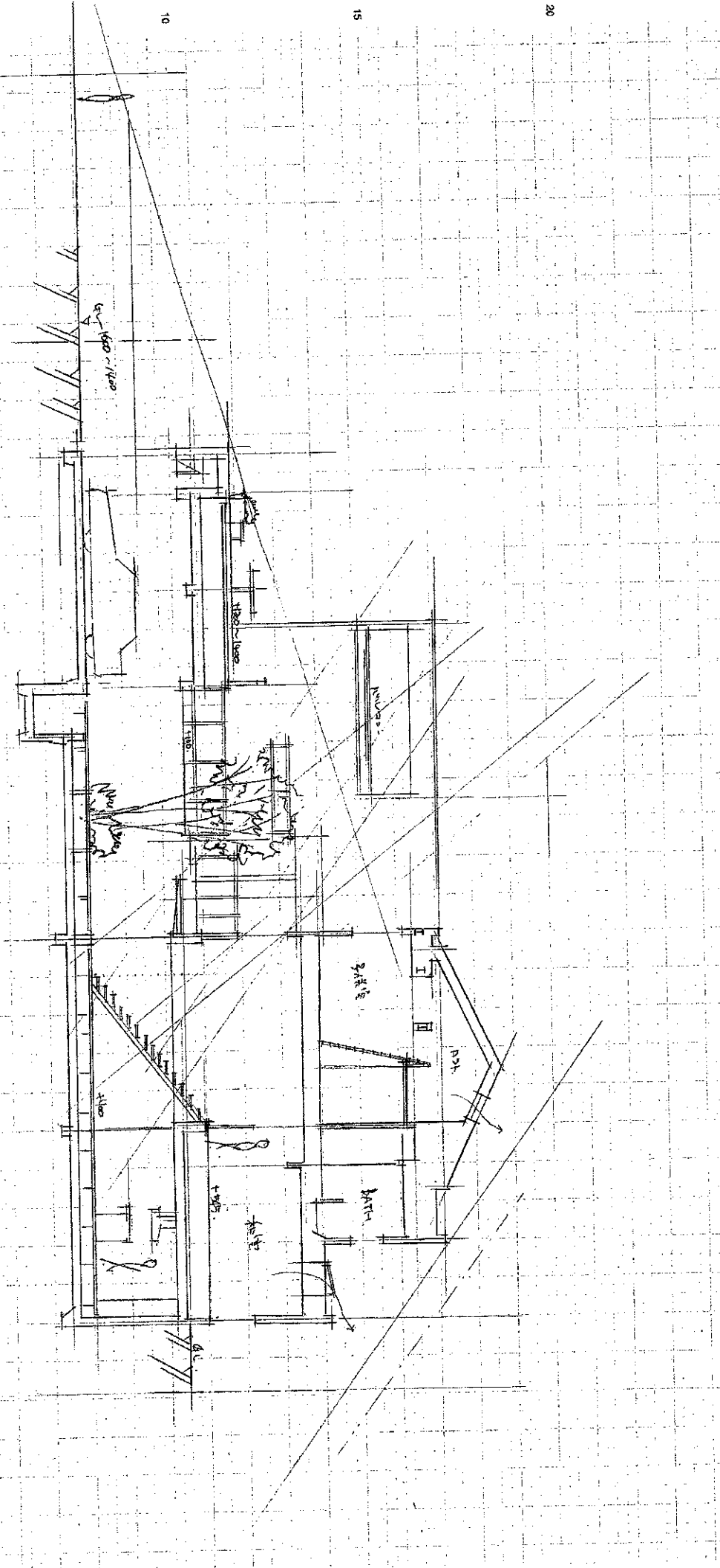
2.4.1.2

2.4.1.2



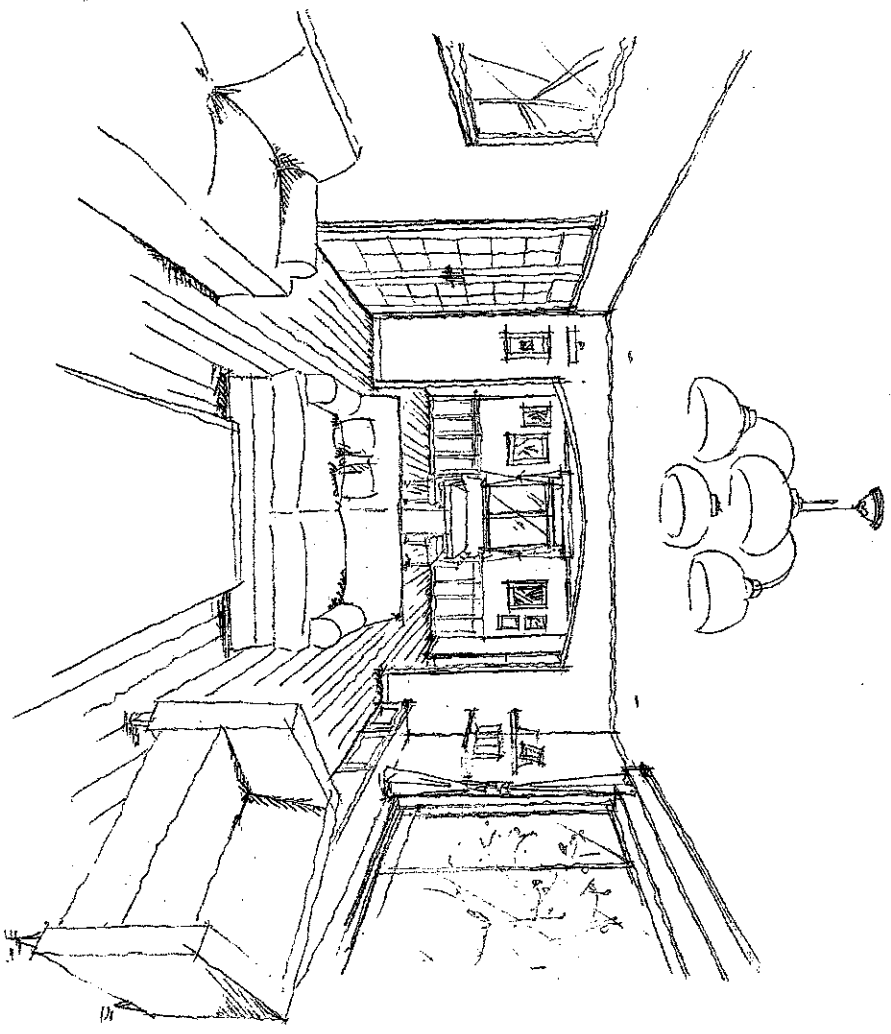
20 m² ... 12.0 x 5
 18 m² ... 10.8 x 5
 14 m² ... 8.4 x 5

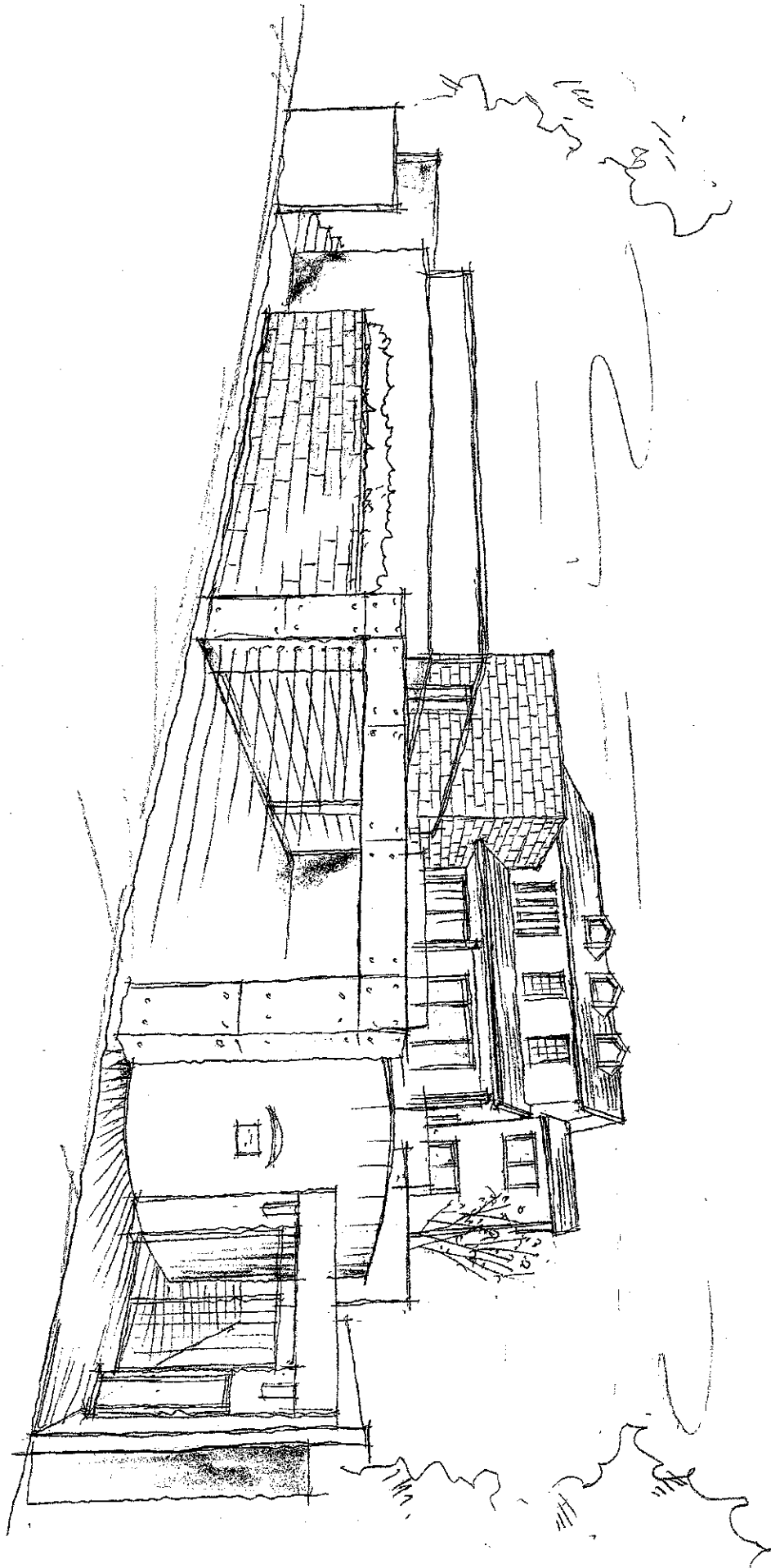
25 5 10 15 20 25 30 35 40



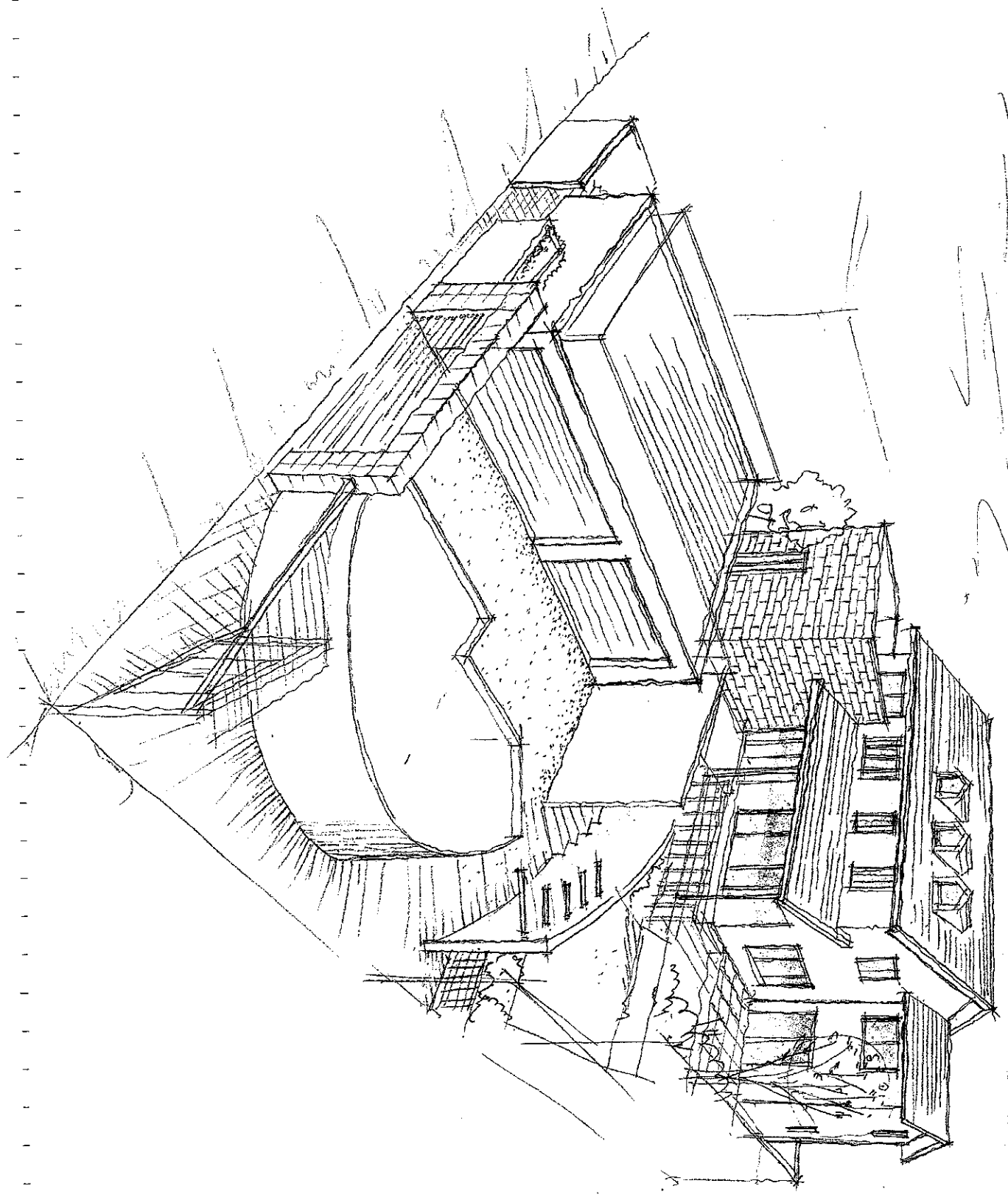
1. AREA	m ²	7	TOTAL AREA	m ²	7
2. AREA	m ²	7			
3. AREA	m ²	7			
	m ²	7			

DATE:	
PLANNER:	
No.	





250 module



250 module